



Open Auditions are open to all interested young musicians, ages 8-18, for all Napa Valley Youth Symphony ensembles each Spring and Fall. We will hold auditions on a rolling basis during the season depending on the needs of each ensemble.

This audition packet is for the **Youth Symphony**.

Ensemble Information and Audition Dates

Our audition dates and appointments are available at: <https://www.nvyso.org/info/audition>.

→ **Youth Symphony** (Level 3): Intermediate to Advanced Musicians. Ages 12 to 18.

◆ **Chamber Orchestra:** *Advanced Strings Musicians by invitation. Participation concurrent with Youth Symphony.*

New to our Auditions?

Please prepare the audition materials that are appropriate to your current playing level. Seek advice from your private teacher or music instructor about which level of audition materials is most appropriate to prepare based on your current skill level. If you do not have a private teacher or music instructor - ask us!

Advancing Musicians: For those already in an ensemble and would like to advance to a higher level of ensemble, discuss your interest to advance with your ensemble Director and prepare the scales and excerpts for the highest level ensemble in which you would like to play in.

Audition Requirements – YOUTH SYMPHONY

→ **Section I (Scales and Articulations):** Prepare all scales. You may choose one scale to begin this section of the audition. Other scales may be asked in addition to the scale you choose to play. Be prepared with the following articulation examples for the scale:

◆ Slur 2 Notes

◆ Marcato

◆ Slur 4 Notes

◆ Staccato

◆ Slur 8 Notes

◆ Double-tonguing

→ **Section II (Excerpts):** Please view and prepare the designated excerpts for your instrument.

→ **Section III (Solo Piece):** Please prepare one solo piece that demonstrates your most advanced abilities on your instrument. Make sure you work with your instructor on the piece so that you can play it well and feel comfortable playing it in front of others.

Sections I and II are attached for your practice prior to the audition. All auditions will be held with a panel of at least two adjudicators selected as appropriate for your level and instrument family. Only the musician is allowed to enter the room; parents/guardians may wait in the lobby area. Please expect auditions to be 10-15 minutes.

Audition Appointments

To request an audition appointment, please submit an audition request form at:

<https://www.nvyso.org/info/audition>.

Questions?

Please contact us at orchestra@nvysso.org.

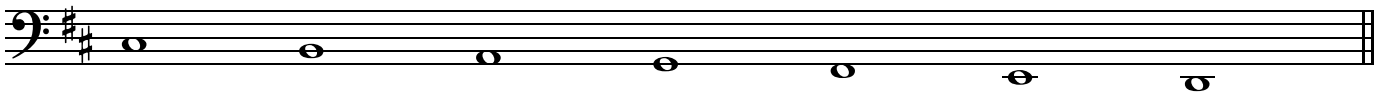
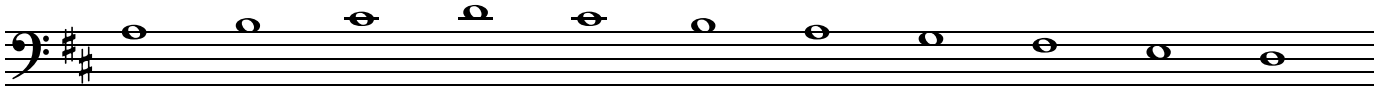
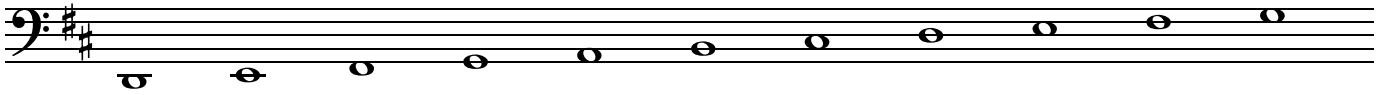


NAPA VALLEY YOUTH SYMPHONY

Bassoon Level 3 Scales

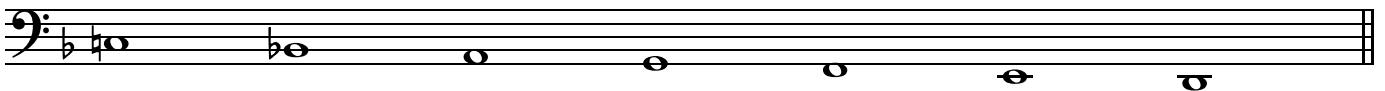
♩ = 120

Two octaves D Major



♩ = 120

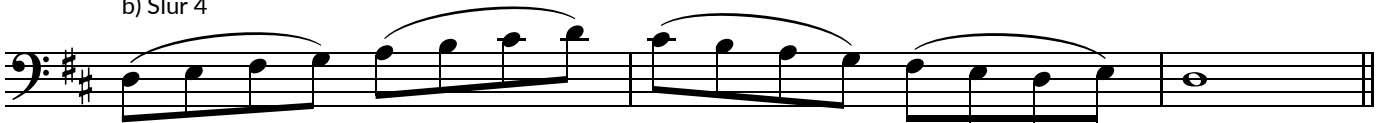
Two octaves D Melodic minor



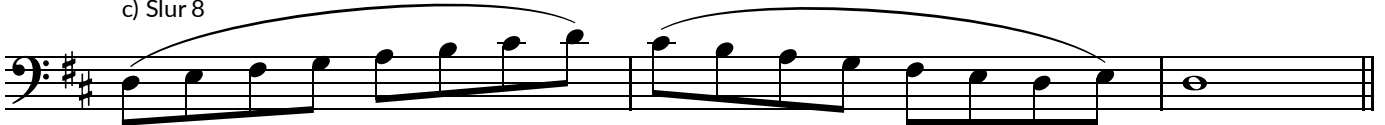
a) Slur 2



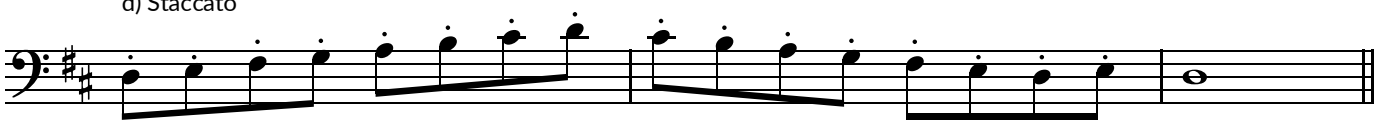
b) Slur 4



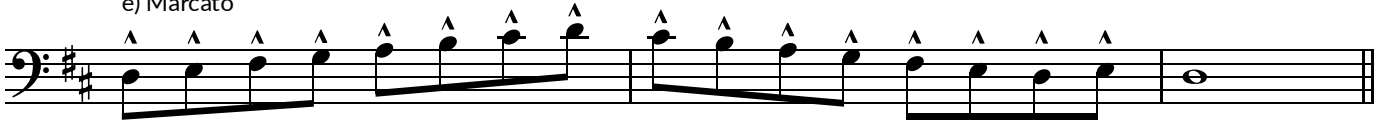
c) Slur 8



d) Staccato



e) Marcato



f) Double-tongue





NAPA VALLEY YOUTH SYMPHONY

NVYS Bassoon Excerpts

Holst/Smith, In the Bleak Midwinter

Flowing ♩ = 92

Musical notation for the first excerpt of 'In the Bleak Midwinter'. The key signature is two flats (B-flat and E-flat), and the time signature is 4/4. The music begins with a mezzo-piano (*mp*) dynamic and gradually increases to a forte (*f*) dynamic. The notation consists of a single staff with a bass clef, showing a series of eighth and quarter notes.

5 *rit.*

Musical notation for the second excerpt of 'In the Bleak Midwinter', starting at measure 5. The tempo is marked *rit.* (ritardando). The key signature remains two flats. The music features a mix of eighth and quarter notes, ending with a forte (*f*) dynamic. The notation is on a single staff with a bass clef.

Saint-Saëns, Marche Militaire Française

Allegro giocoso

Musical notation for the first excerpt of 'Marche Militaire Française'. The key signature is one sharp (F-sharp), and the time signature is 2/4. The music starts with a forte (*f*) dynamic and includes accents (^) over several notes. The notation is on a single staff with a bass clef.

6

Musical notation for the second excerpt of 'Marche Militaire Française', starting at measure 6. The key signature is one sharp. The music continues with a forte (*f*) dynamic and includes accents (^) over several notes. The notation is on a single staff with a bass clef.

Dvorak, Symphony No. 9, 1st mvt.

Allegro molto ♩ = 136

p *ff* *fz*

9

fz *fz* *f*

18

ff

25

ff *fz*

Dvorak, Symphony No. 9, 4th mvt.

Un poco sostenuto. ♩ = 112

mf marcato *f*

5

stacc. *p*